



KEYSURGICAL®



8101 Wallace Road
Eden Prairie, MN 55344 USA

Tel. 800.541.7995 952.914.9789
Fax 952.914.9866

keysurgical.com info@keysurgical.com

KEY SURGICAL TAGS

Catalog pages 054 - 065

KEY SURGICAL TAGS

Key Surgical Tags are designed to help you identify your instruments, trays and carts as they move from sterilization to staging areas to surgery. Our tags allow you to indicate special handling instructions, secure trays and carts from tampering and quickly identify priority instruments for repair and sterilization. Key Surgical Tags are available in a wide range of styles, colors and locking configurations. As always, we are happy to design custom orders for your particular needs.

Key Surgical Locking Tags are available in a rainbow of bright colors for high-visibility and quick identification. We also offer sequentially numbered tags as well as tags with preprinted special handling instructions. Our Locking Tags are quick and easy to attach and remove, and can be easily adapted to your own specific coding needs. We also have Indicator Dot Locking Tags, which change color after exposure to steam sterilization.

Key Surgical Breakaway Tags are available in a range of colors and can also be written on with permanent marker. They must be cut or broken to open, providing a secure lock.

Key Surgical Write-On Tags[®] and Smart Tags[®] were designed at the request of our customers. Both tags allow you to write specific handling instructions on each tag when more detailed communication is necessary. These tags attach to instruments and trays with autoclavable ties and are larger and more visible than our other tags, ensuring that detailed instructions will be seen by all. Smart Tags[®] include detachable barcodes for even easier follow-up.

Locking Tags

Indicator Dot Locking Tags

Breakaway Tags

Write-On Tags[®]

Smart Tags[®]

Lab Markers and Ties





LOCKING TAGS

Tamper-resistant. Easily removed without scissors. Autoclavable. Latex-free. Non-sterile. Versatile, durable and economical. 1" length.

Standard Color Tags

| Number | Description | Color | Quantity |
|-----------------|----------------------|--------|----------|
| A LT-130 | PULL SET FOR SERVICE | white | 100 |
| LT-130-1000 | PULL SET FOR SERVICE | white | 1000 |
| B LT-150 | CLEAN | white | 100 |
| LT-150-1000 | CLEAN | white | 1000 |
| C LT-210 | QUICK TURNOVER | blue | 100 |
| LT-210-1000 | QUICK TURNOVER | blue | 1000 |
| D LT-220 | SHORT | blue | 100 |
| LT-220-1000 | SHORT | blue | 1000 |
| E LT-310 | LOANER | green | 100 |
| LT-310-1000 | LOANER | green | 1000 |
| F LT-323 | RETURN TO O.R. | green | 100 |
| LT-323-1000 | RETURN TO O.R. | green | 1000 |
| G LT-450 | REPAIR | red | 100 |
| LT-450-1000 | REPAIR | red | 1000 |
| H LT-550 | SHARPEN | yellow | 100 |
| LT-550-1000 | SHARPEN | yellow | 1000 |
| I LT-930 | DISCARD | black | 100 |
| LT-930-1000 | DISCARD | black | 1000 |

Special Color Tags

| Number | Description | Color | Quantity |
|-----------------|-------------|--------|----------|
| J LT-620 | FLOOR TRAY | gray | 100 |
| LT-620-1000 | FLOOR TRAY | gray | 1000 |
| K LT-720 | BROKEN | orange | 100 |
| LT-720-1000 | BROKEN | orange | 1000 |
| L LT-820 | DIRTY | brown | 100 |
| LT-820-1000 | DIRTY | brown | 1000 |

Numbered Tags

| Number | Description | Color | Quantity |
|------------------|-------------------|--------|----------|
| M LT-100N | uniquely numbered | white | 100 |
| LT-100N-1000 | uniquely numbered | white | 1000 |
| N LT-300N | uniquely numbered | green | 100 |
| LT-300N-1000 | uniquely numbered | green | 1000 |
| O LT-400N | uniquely numbered | red | 100 |
| LT-400N-1000 | uniquely numbered | red | 1000 |
| P LT-500N | uniquely numbered | yellow | 100 |
| LT-500N-1000 | uniquely numbered | yellow | 1000 |
| Q LT-900N | uniquely numbered | black | 100 |
| LT-900N-1000 | uniquely numbered | black | 1000 |

CUSTOM ORDER LOCKING TAGS AVAILABLE ON REQUEST

Tags – Indicator Dot Tags and Locking Tags



INDICATOR DOT LOCKING TAGS

Steam Process Indicator Dots on tags change color to indicate exposure to steam sterilization (blue dot to black dot). Tamper resistant. Easily removed without scissors. Autoclavable. Latex-free. Non-sterile. Versatile, durable and economical. 1" length.

| Number | Description | Color | Quantity | |
|--------|-------------|--|----------|-----|
| A | LS-100 | Indicator Dot Tag - Steam Autoclavable | white | 100 |
| B | LS-400 | Indicator Dot Tag - Steam Autoclavable | red | 100 |

LOCKING TAGS

Tamper resistant. Easily removed without scissors. Autoclavable. Latex-free. Non-sterile. Versatile, durable and economical. 1" length. 100 per package.

Standard Color Tags

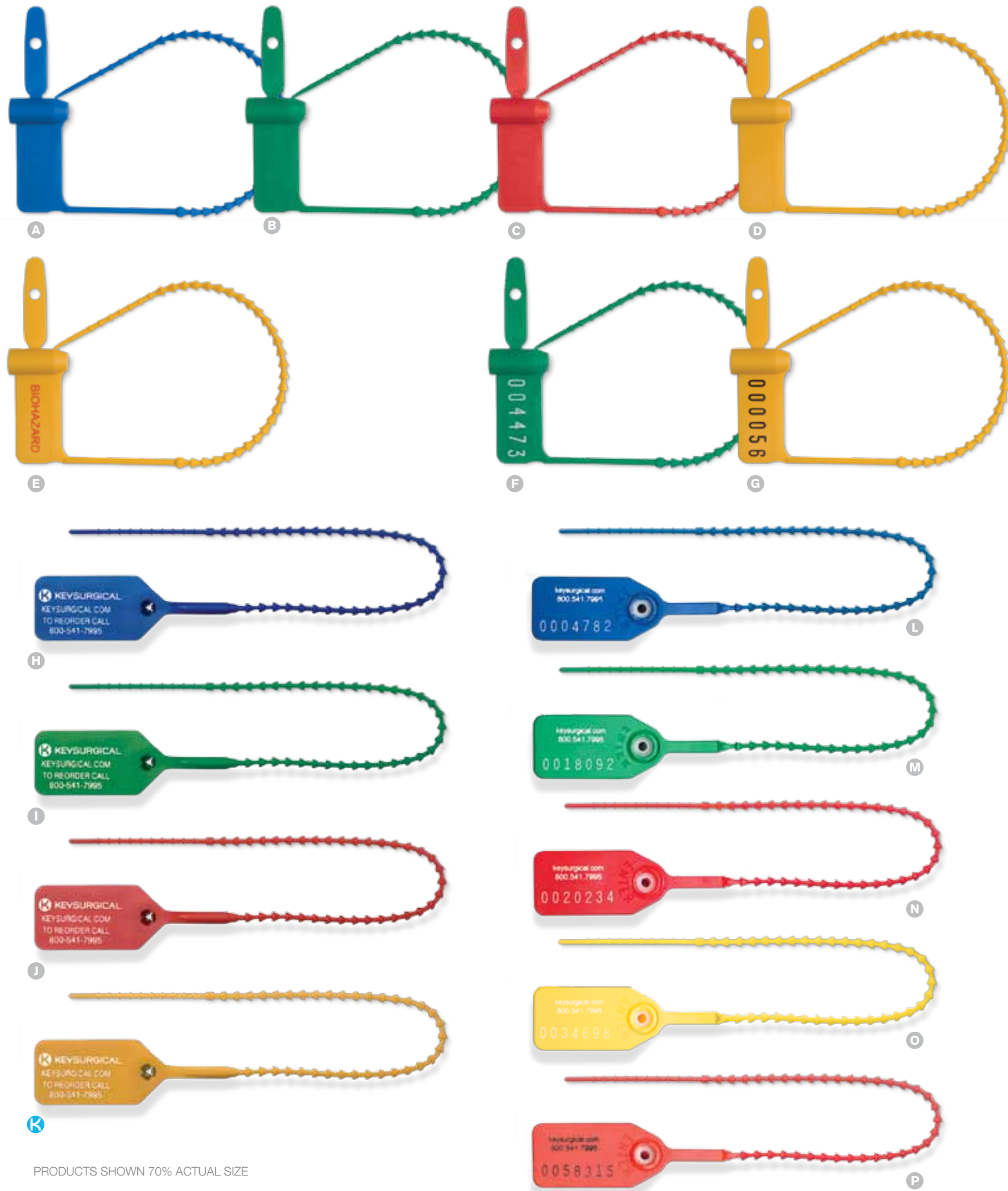
| Number | Color | Quantity | |
|--------|-------------|----------|------|
| C | LT-100 | white | 100 |
| | LT-100-1000 | white | 1000 |
| D | LT-200 | blue | 100 |
| | LT-200-1000 | blue | 1000 |
| E | LT-300 | green | 100 |
| | LT-300-1000 | green | 1000 |
| F | LT-400 | red | 100 |
| | LT-400-1000 | red | 1000 |
| G | LT-500 | yellow | 100 |
| | LT-500-1000 | yellow | 1000 |
| H | LT-900 | black | 100 |
| | LT-900-1000 | black | 1000 |

Special Color Tags

| Number | Color | Quantity | |
|--------|-------------|----------|------|
| I | LT-110 | pink | 100 |
| | LT-110-1000 | pink | 1000 |
| J | LT-112 | gold | 100 |
| | LT-112-1000 | gold | 1000 |
| K | LT-116 | purple | 100 |
| | LT-116-1000 | purple | 1000 |
| L | LT-600 | gray | 100 |
| | LT-600-1000 | gray | 1000 |
| M | LT-700 | orange | 100 |
| | LT-700-1000 | orange | 1000 |
| N | LT-800 | brown | 100 |
| | LT-800-1000 | brown | 1000 |

CUSTOM ORDER LOCKING TAGS AVAILABLE UPON REQUEST

Tags – Breakaway Tags and Padlock Tags



BREAKAWAY TAGS

Tags cinch closed until tight and must be cut or broken to open, providing a secure lock. Tamper resistant with "SEALED" stamped on reverse. Latex-free. Non-sterile. Versatile, durable and economical.

| | Number | Color | Description | Overall Length | Quantity |
|---|-----------|--------|------------------------------------|----------------|----------|
| A | LR-102 | blue | autoclavable | 6" | 100 |
| B | LR-103 | green | autoclavable | 6" | 100 |
| C | LR-104 | red | autoclavable | 6" | 100 |
| D | LR-105 | yellow | autoclavable | 6" | 100 |
| E | LR-105-01 | yellow | autoclavable, preprinted BIOHAZARD | 6" | 100 |
| F | LR-103N | green | autoclavable, uniquely numbered | 6" | 100 |
| G | LR-105N | yellow | autoclavable, uniquely numbered | 6" | 100 |
| H | LR-312 | blue | autoclavable | 8" | 100 |
| I | LR-313 | green | autoclavable | 8" | 100 |
| J | LR-314 | red | autoclavable | 8" | 100 |
| K | LR-315 | yellow | autoclavable | 8" | 100 |
| L | LR-322 | blue | uniquely numbered | 10" | 100 |
| M | LR-323 | green | uniquely numbered | 10" | 100 |
| N | LR-324 | red | uniquely numbered | 10" | 100 |
| O | LR-325 | yellow | uniquely numbered | 10" | 100 |
| P | LR-327 | orange | uniquely numbered | 10" | 100 |
| Q | LR-329 | black | uniquely numbered | 10" | 100 |



PRODUCTS SHOWN 70% ACTUAL SIZE

Tags – Write-On Tags, Lab Markers and Ties



WRITE-ON TAGS ARE 3" X 5"

WRITE-ON TAGS

Identify and record specific instructions with these versatile tags. "BROKEN" tag has room for additional information on reverse side. Each package of 100 contains 1 lab marker whose ink is autoclavable, waterproof and alcohol resistant. Autoclavable. Tamper-resistant. Latex-free. Non-sterile. Durable and economical. 3" x 5".

| Number | Description | Color | Quantity | |
|--------|-------------|--------------------|----------|--------------------------------|
| A | WT-0009 | Blank Tag | black | 100 tags/100 ties/1 lab marker |
| B | WT-0102 | VENDOR | blue | 100 tags/100 ties/1 lab marker |
| C | WT-0203 | LOANER | green | 100 tags/100 ties/1 lab marker |
| D | WT-0304 | PRIORITY | red | 100 tags/100 ties/1 lab marker |
| E | WT-0405 | RE-RUN | yellow | 100 tags/100 ties/1 lab marker |
| F | WT-0507 | BROKEN (two-sided) | orange | 100 tags/100 ties/1 lab marker |
| G | WT-1911 | MISSING | pink | 100 tags/100 ties/1 lab marker |

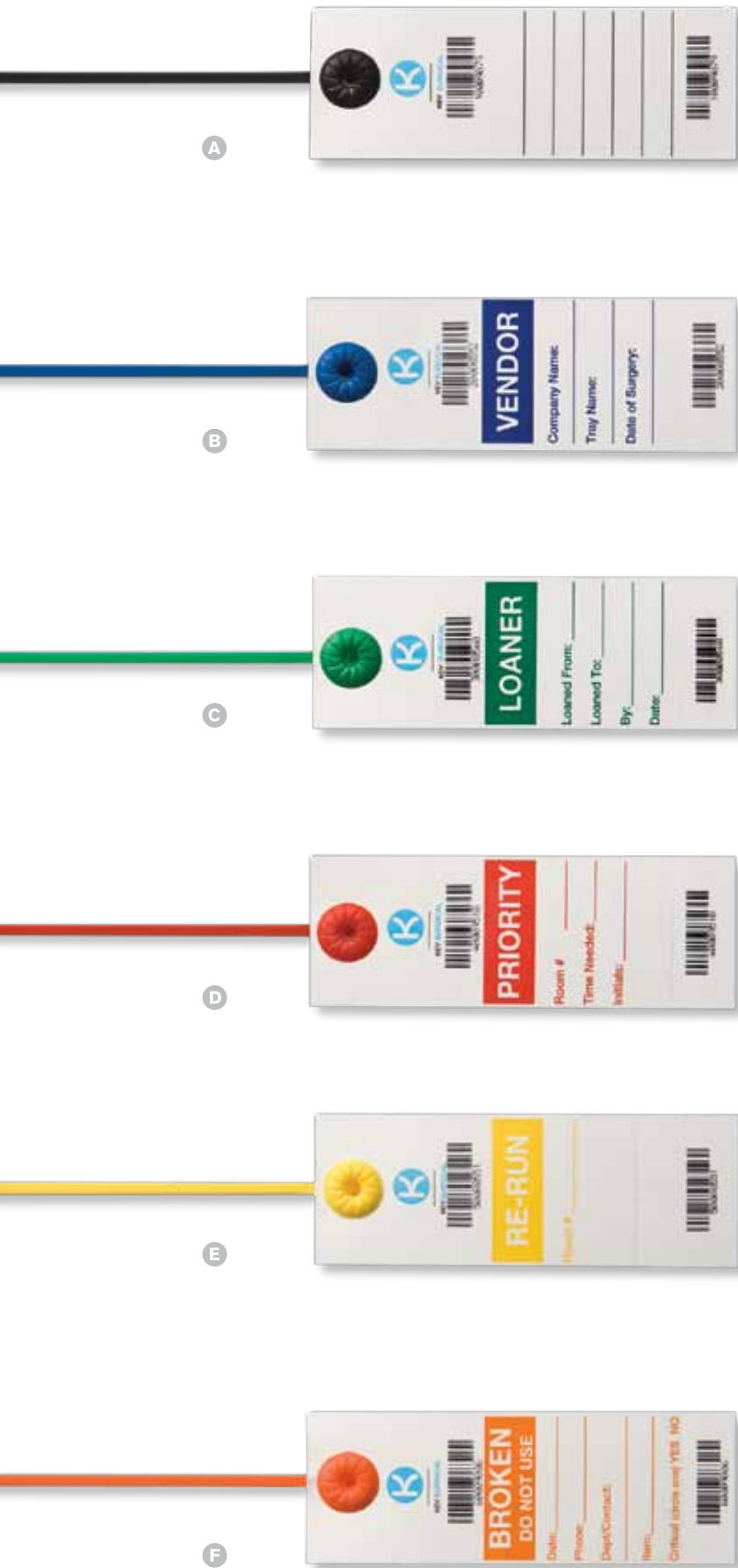
CUSTOM ORDER WRITE-ON TAGS AVAILABLE ON REQUEST

LAB MARKERS AND TIES

Non-sterile. Ink is autoclavable, waterproof and alcohol resistant. Ties are autoclavable.

| Number | Description | Color | Quantity | |
|--------|-------------|------------------|----------|------------------|
| H | RT-100P | black lab marker | black | 10 per package |
| I | RT-100T | ties (6") | white | 1000 per package |





SMART TAGS ARE 2" X 5.5"

SMART TAGS

Durable, lockable tags are barcoded and have tear off barcode for additional tracking. Identify and record specific instructions on these one piece versatile tags. Autoclavable. Tamper-resistant. Latex-free. Non-sterile. 2" x 5.5"

| | Number | Description | Color | Quantity |
|---|---------|-------------|--------|----------------------|
| A | ST-0009 | Blank Tag | black | 50 tags/1 lab marker |
| B | ST-0102 | VENDOR | blue | 50 tags/1 lab marker |
| C | ST-0203 | LOANER | green | 50 tags/1 lab marker |
| D | ST-0304 | PRIORITY | red | 50 tags/1 lab marker |
| E | ST-0405 | RE-RUN | yellow | 50 tags/1 lab marker |
| F | ST-0507 | BROKEN | orange | 50 tags/1 lab marker |

